

Session Name

2-11-2017 11-21 AM

Date Created

2/11/2017 8:10:24 AM

Active Participants

89

Average Score

0.00%

Questions

28

Results by Question**1. How old are you? (Multiple Choice)**

Responses		
	Percent	Count
Less than 18	0.00%	0
18 – 25	1.59%	1
26 – 33	15.87%	10
34 – 41	17.46%	11
42 – 49	14.29%	9
50 – 57	17.46%	11
58 – 65	20.63%	13
66 – 73	9.52%	6
Greater than 73	3.17%	2
Totals	100%	63

2. Do you live within Scappoose City limits? (Multiple Choice)

Responses		
	Percent	Count
Yes	72.37%	55
No	27.63%	21
Unsure	0.00%	0
Totals	100%	76

3. How long have you lived in the Scappoose area? (Multiple Choice)

Responses		
	Percent	Count
Less than 1 year	13.16%	10
1 – 3 years	10.53%	8
4 – 6 years	13.16%	10
7 – 9 years	3.95%	3
10 – 12 years	6.58%	5
13 – 15 years	9.21%	7
16 – 18 years	3.95%	3
19 – 21 years	5.26%	4
More than 21 years	34.21%	26
Totals	100%	76

4. In 20 years what do you see as the ideal population of Scappoose? (Multiple Choice)

Responses		
	Percent	Count
Same as today	11.39%	9
10,000	30.38%	24
13,000	30.38%	24
16,000	18.99%	15
I don't know	8.86%	7
Totals	100%	79

5. How did you hear about the ATM? (Multiple Choice)

Responses		
	Percent	Count
Signs along Hwy 30	6.41%	5
The Spotlight newspaper	5.13%	4
City newsletter	41.03%	32
Flyers around town	3.85%	3
Word of mouth	25.64%	20
The City's website	3.85%	3
Social media (i.e. Facebook etc.)	2.56%	2
Other	11.54%	9
Totals	100%	78

6. What housing issue concerns you the most in Scappoose? (Multiple Choice)

Responses		
	Percent	Count
Cost of homeownership	6.58%	5
Cost of rent	5.26%	4
Housing availability	18.42%	14
Too much growth too quickly	23.68%	18
All of the above	42.11%	32
Other	3.95%	3
Totals	100%	76

7. If Scappoose allows smaller single-family lots, what is the smallest lot size the City should allow?

Responses		
	Percent	Count
naller than Dutch Canyon Estates)	42.67%	32
4,000 square feet	17.33%	13
3,000 square feet	22.67%	17
not allow smaller single family lots	17.33%	13
Totals	100%	75

8. Should the City allow Cottage Cluster type housing in certain areas? (Multiple Choice)

Responses		
	Percent	Count
Yes	80.00%	60
No	14.67%	11
I'm not sure	5.33%	4
Totals	100%	75

9. Should the City allow Tiny Houses in selected areas? (Multiple Choice)

Responses		
	Percent	Count
Yes	32.91%	26
Yes, but only on single lots	6.33%	5
but only in tiny home communities	29.11%	23
No	22.78%	18
I'm not sure	8.86%	7
Totals	100%	79

10. Should the City allow multiplexes in the low density zone? (Multiple Choice)

Responses		
	Percent	Count
Yes	50.72%	35
Yes, but only on corner lots	24.64%	17
No	24.64%	17
Totals	100%	69

11. What issues concern you most about apartment complexes in Scappoose? (Multiple Choice)

Responses		
	Percent	Count
Design of the buildings	16.67%	12

Parking	23.61%	17
Proximity to single family homes	19.44%	14
Proximity to apartment complexes in one area	12.50%	9
All of the above	25.00%	18
None of the above	2.78%	2
Totals	100%	72

12. Do you think the City should allow for increased housing density on a parcel affected by the flood zone?

Responses		
	Percent	Count
Yes	44.16%	34
No	40.26%	31
I'm not sure	15.58%	12
Totals	100%	77

13. Should the City allow buildings up to 60 feet (about 5 stories) in the commercial zone? (Multiple choice)

Responses		
	Percent	Count
Yes	41.03%	32
No, but only for mixed use buildings	37.18%	29
No	21.79%	17
Totals	100%	78

14. What types of residential development should the City allow in commercial zones? (Multiple Choice)

Responses		
	Percent	Count
is what our code currently allows)	11.69%	9
rst floor (aka mixed use buildings)	42.86%	33
Both A and B	45.45%	35
Totals	100%	77

15. How important are parks to you when choosing where to live? (Multiple Choice)

Responses		
	Percent	Count
Very important	44.26%	27
Somewhat important	40.98%	25
Not that important	8.20%	5
It doesn't even cross my mind	6.56%	4
Totals	100%	61

16. Does Scappoose’s Park System meet your needs? (Multiple Choice)

Responses		
	Percent	Count
Yes	27.87%	17
No	72.13%	44
Totals	100%	61

17. Do you support a trail along South Scappoose Creek? (Multiple Choice)

Responses		
	Percent	Count
Yes	80.95%	34
No	11.90%	5
I have no opinion	7.14%	3
Totals	100%	42

18. Do you support hiking and biking trails on the “Vista Park” property? (Multiple Choice)

Responses		
	Percent	Count
Yes	80.95%	34
No	16.67%	7
I have no opinion	2.38%	1
Totals	100%	42

19. Do you support a park at Chapman Landing on the Multnomah Channel? (Multiple Choice)

Responses		
	Percent	Count
Yes	92.68%	38
No	4.88%	2
I have no opinion	2.44%	1
Totals	100%	41

20. Do you support further development of the Creekview Park site? (Multiple Choice)

Responses		
	Percent	Count
Yes	52.38%	22
No	26.19%	11
I have no opinion	21.43%	9
Totals	100%	42

21. Do you support a pocket park on the City's well site near Dutch Canyon Road? (Multiple Choice)

Responses		
	Percent	Count
Yes	77.50%	31
No	12.50%	5
I have no opinion	10.00%	4
Totals	100%	40

22. Do you support a park at Keys Road? (Multiple Choice)

Responses	
Percent	Count

Yes	66.67%	28
No	21.43%	9
I have no opinion	11.90%	5
Totals	100%	42

23. Do you support a park at Seely Lane? (Multiple Choice)

Responses		
	Percent	Count
Yes	90.24%	37
No	7.32%	3
I have no opinion	2.44%	1
Totals	100%	41

24. Do you support the improvements to Miller Park? (Multiple Choice)

Responses		
	Percent	Count
Yes	82.05%	32
No	10.26%	4
I have no opinion	7.69%	3

Totals	100%	39
---------------	-------------	-----------

25. Is development of Scappoose Parks important to you? (Multiple Choice)

Responses		
	Percent	Count
Yes	93.02%	40
No	6.98%	3
Totals	100%	43

26. Would you be willing to help pay for the development of new parks? (Multiple Choice)

Responses		
	Percent	Count
Yes	92.31%	36
No	7.69%	3
Totals	100%	39

27. Would you support a 5 year levy? (Multiple Choice)

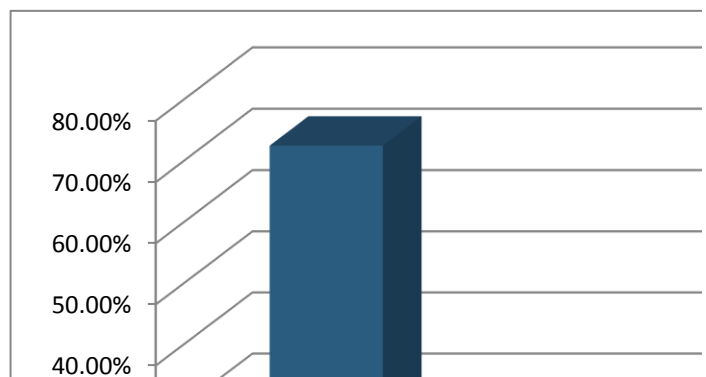
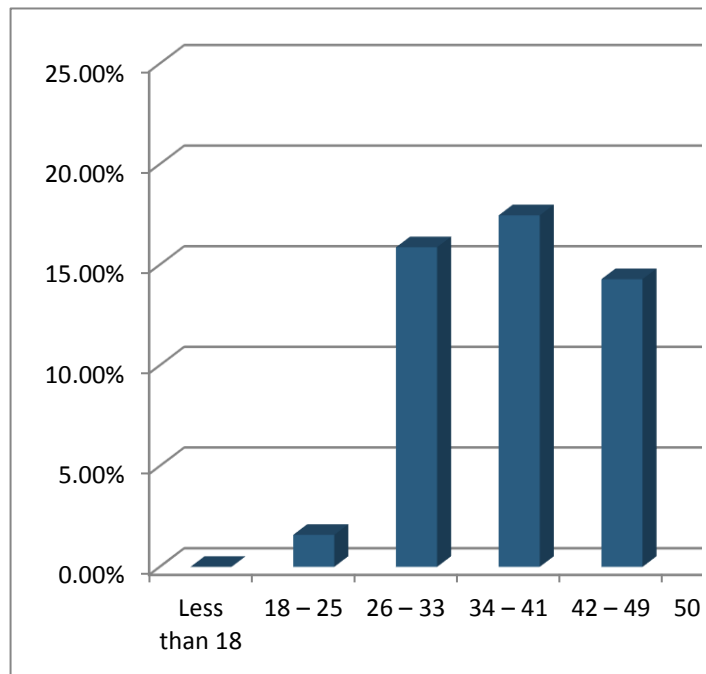
Responses		
	Percent	Count
Yes	89.47%	34
No	10.53%	4
Totals	100%	38

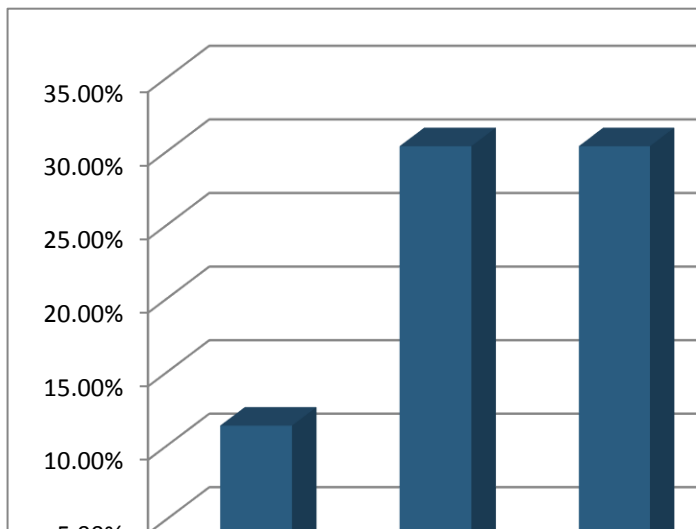
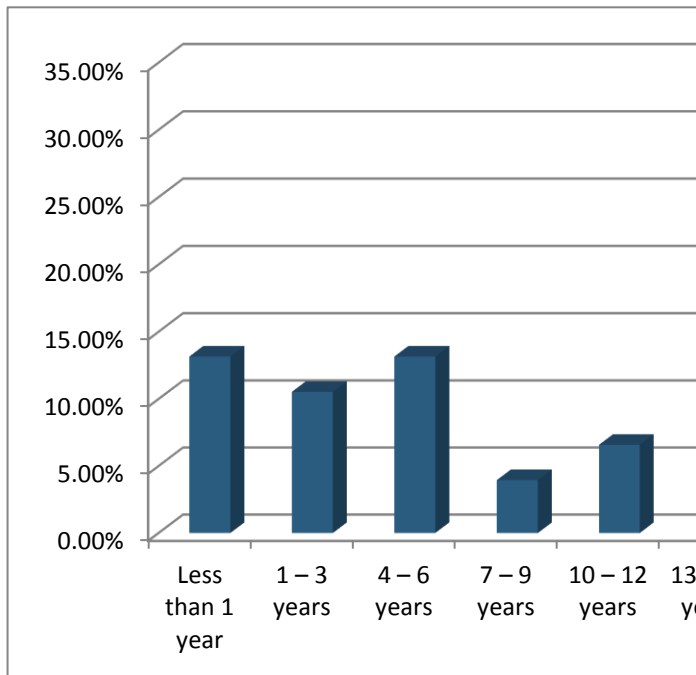
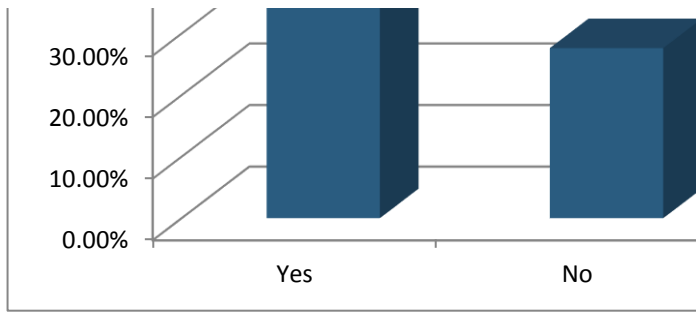
28. Would you support a taxing district? (Multiple Choice)

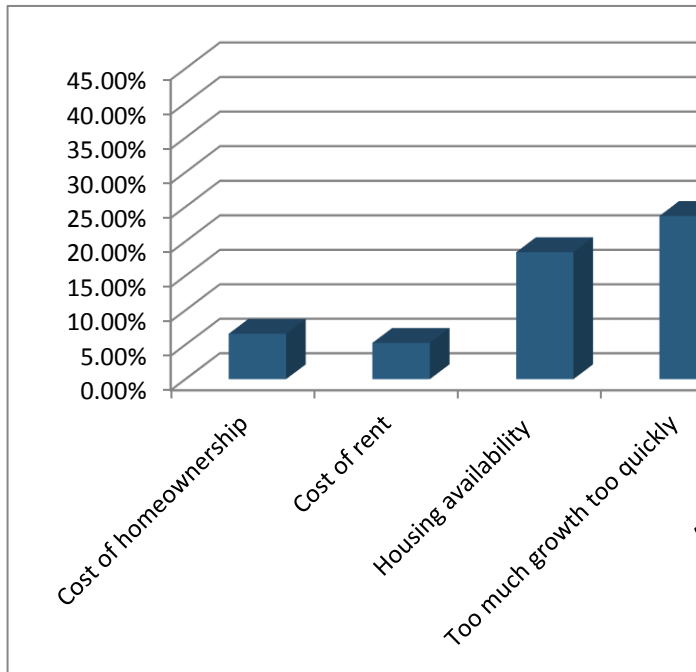
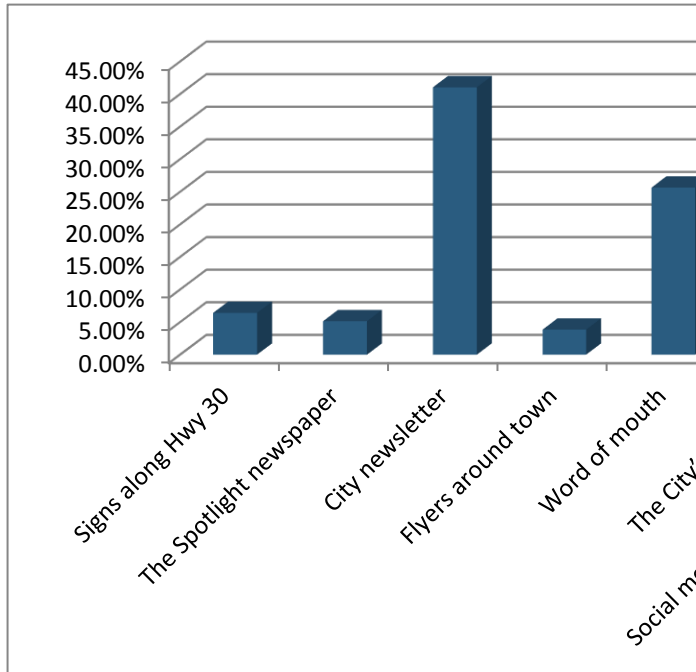
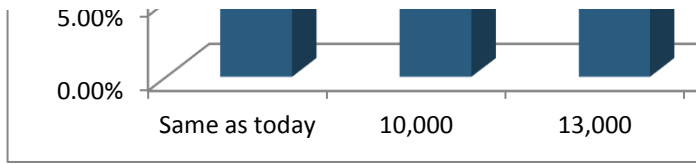
Responses		
	Percent	Count
Yes	88.10%	37
No	11.90%	5
Totals	100%	42

Total Participants

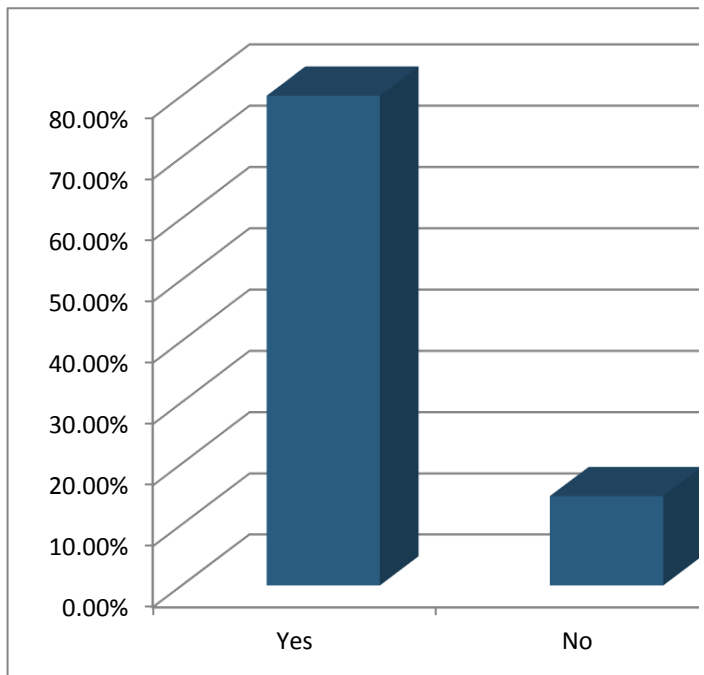
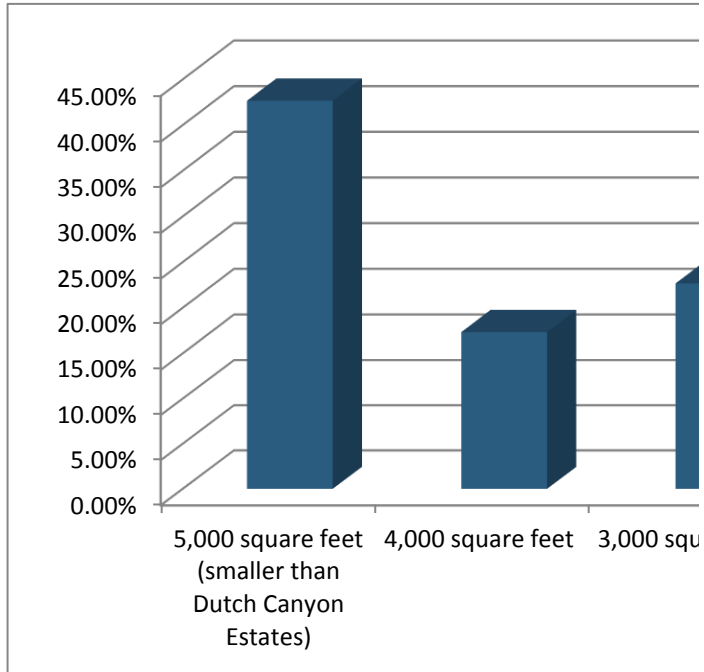
89

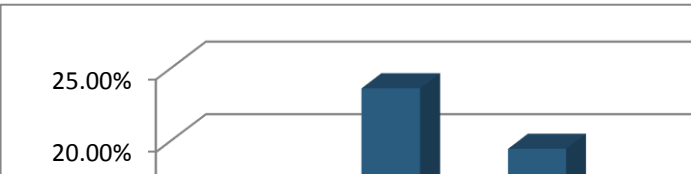
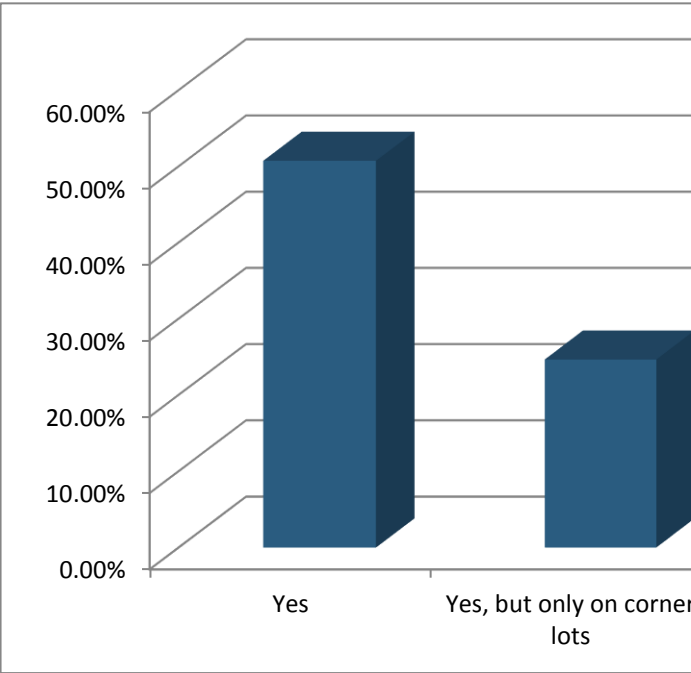
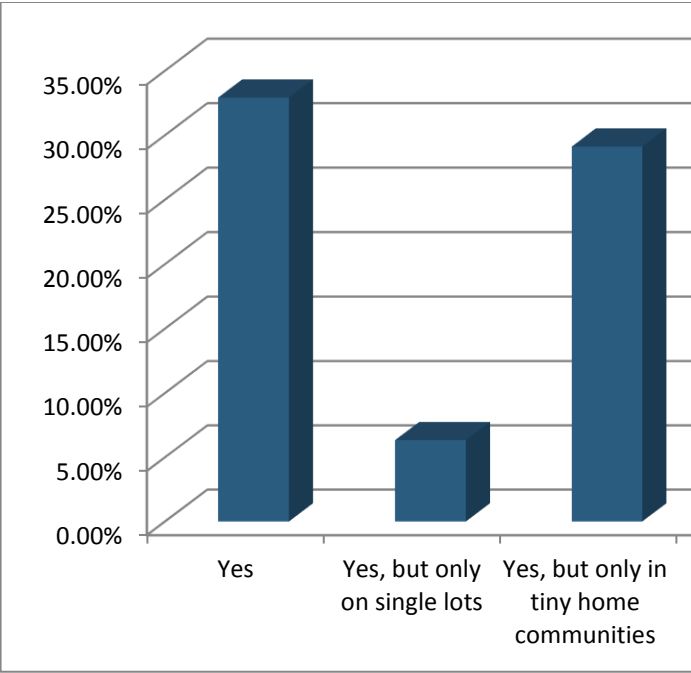


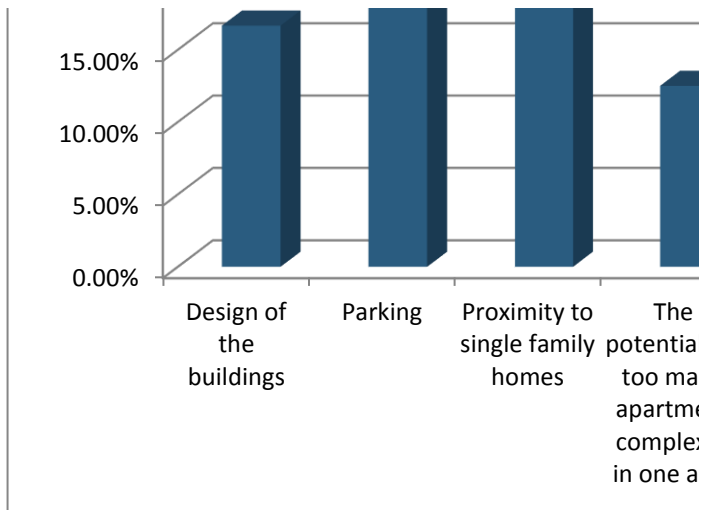




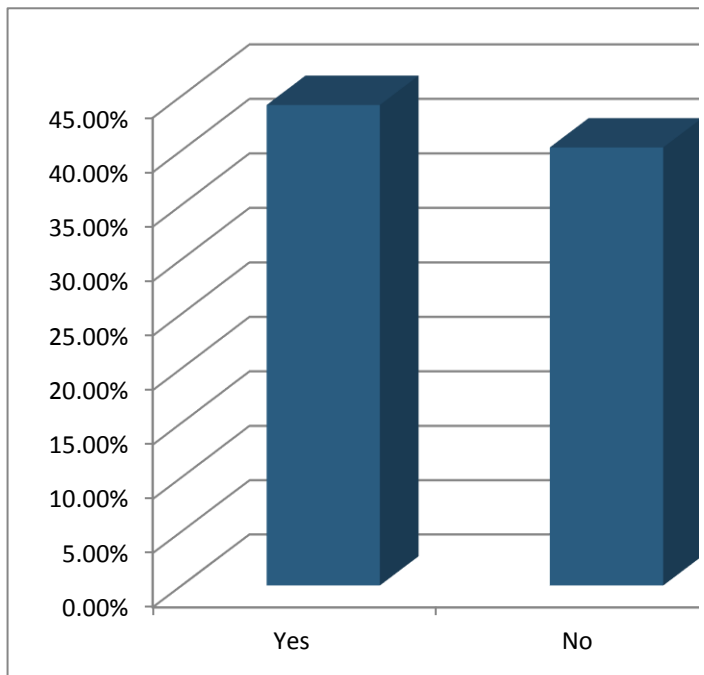
(Multiple Choice)



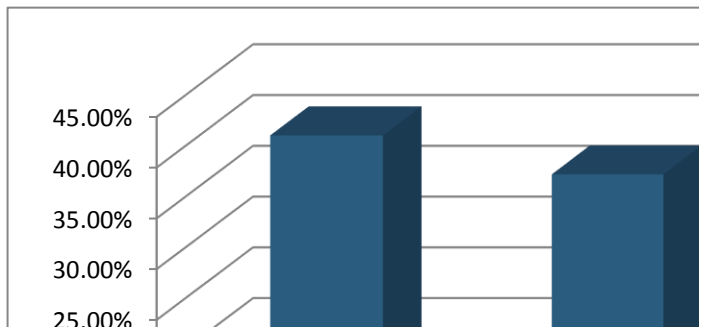


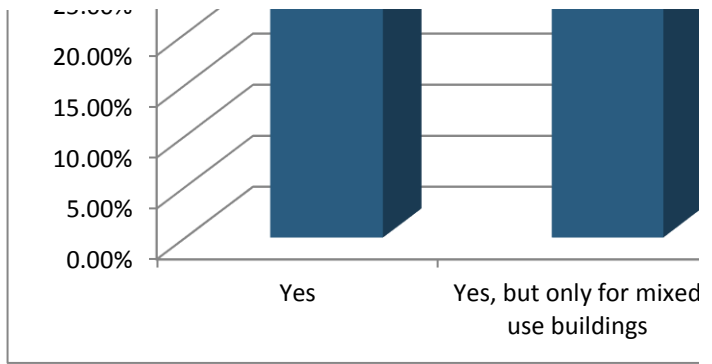


Explain if the developer agrees to dedicate the land area within the floodplain to the City as public open space.

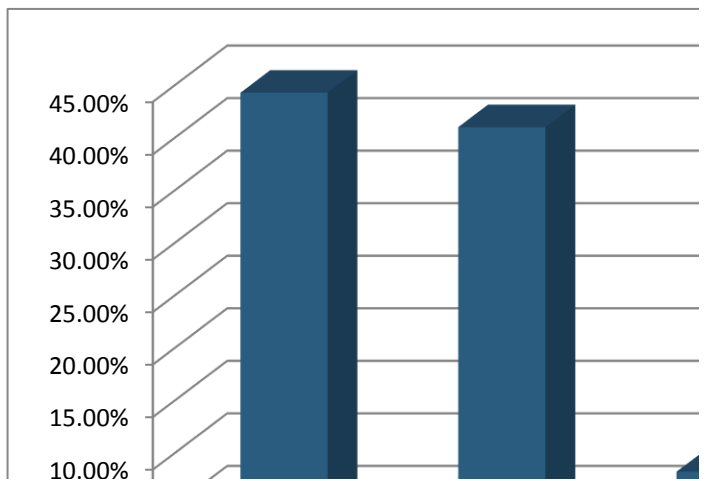
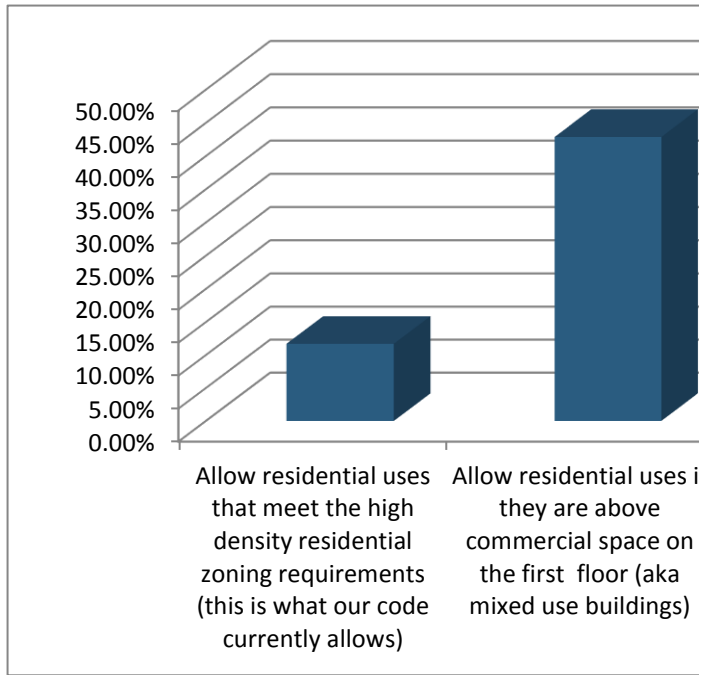


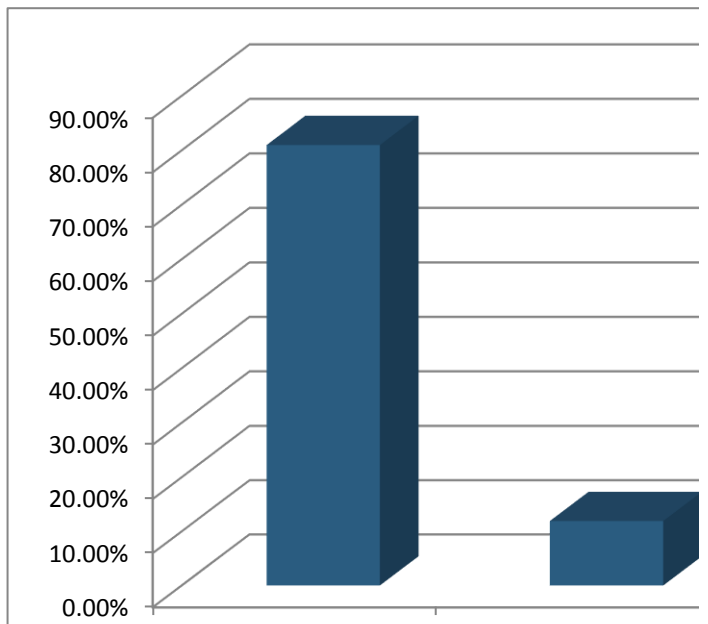
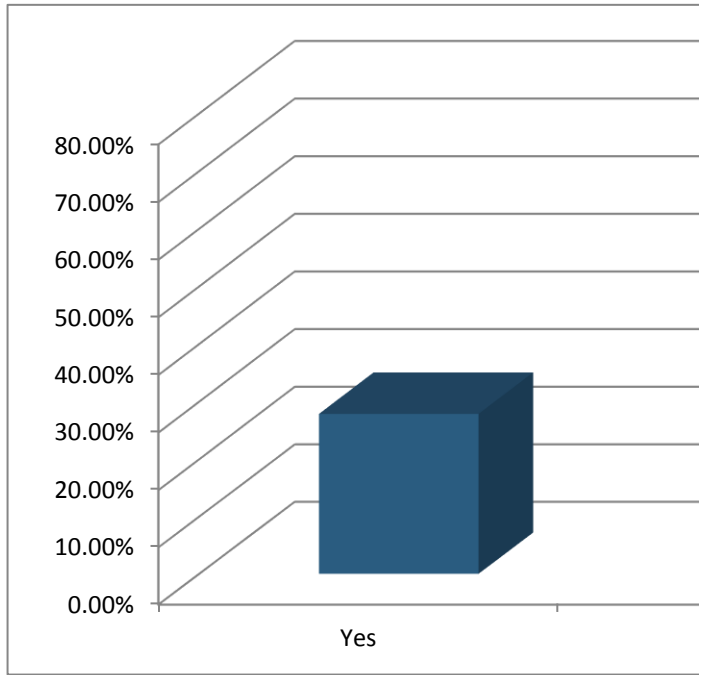
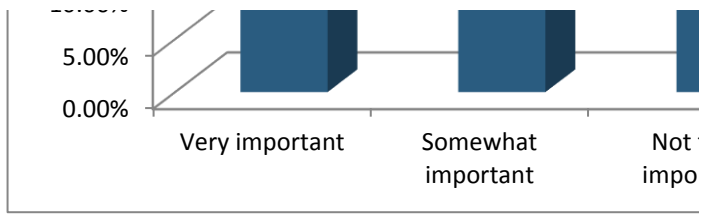
Choice)



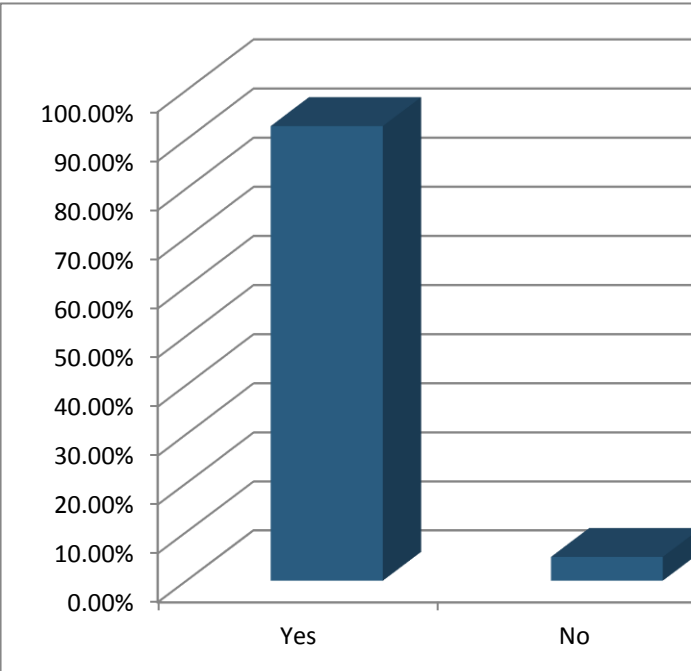
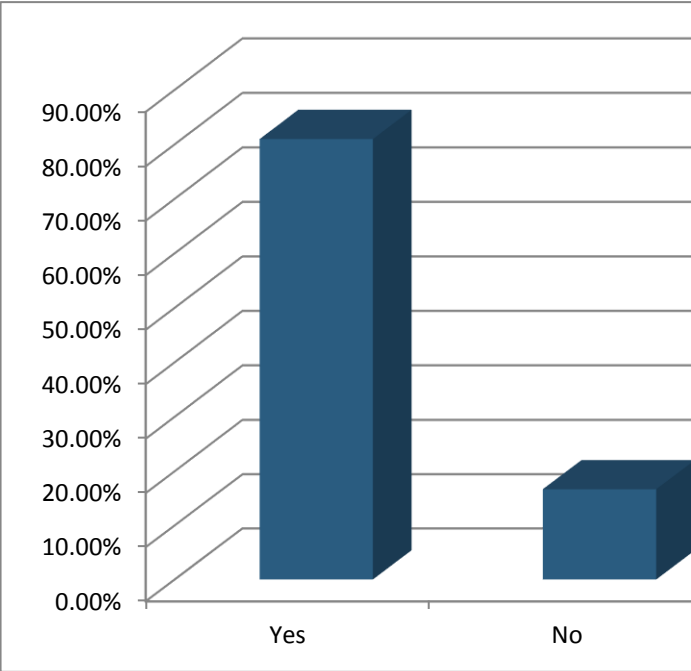


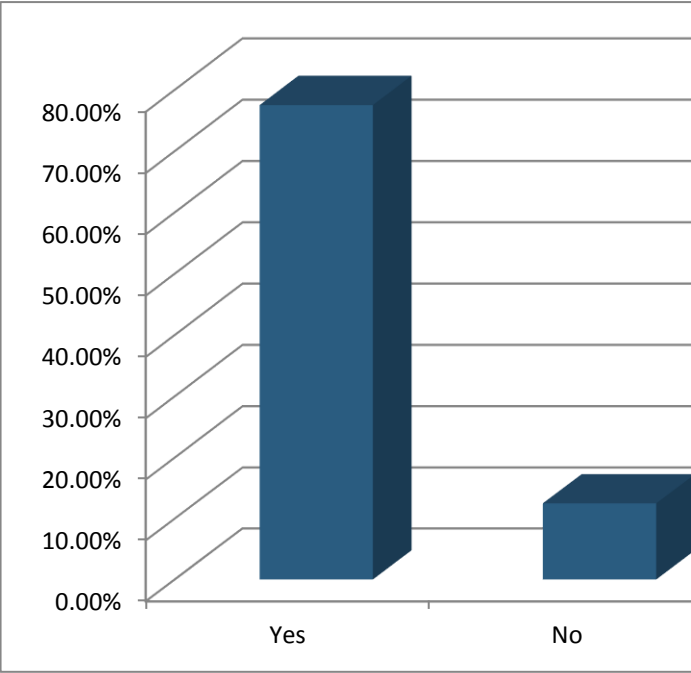
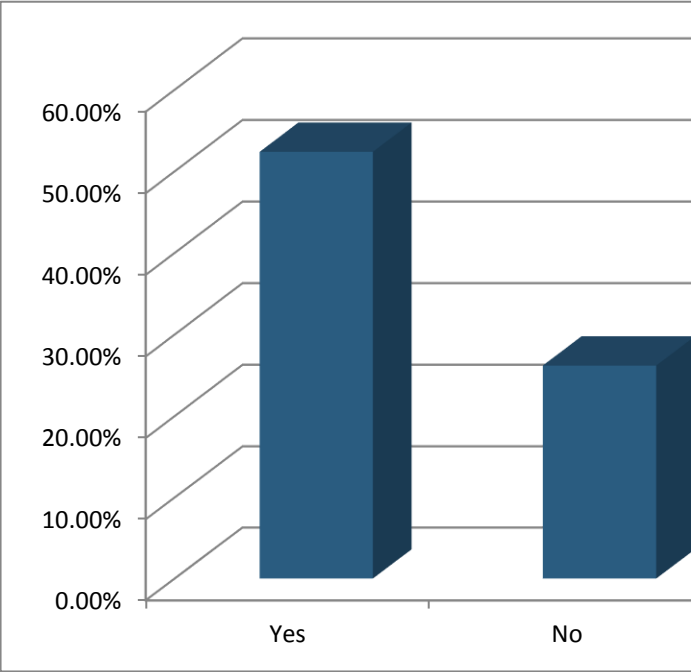
ice)

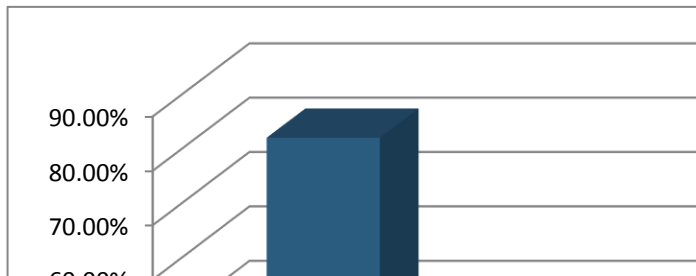
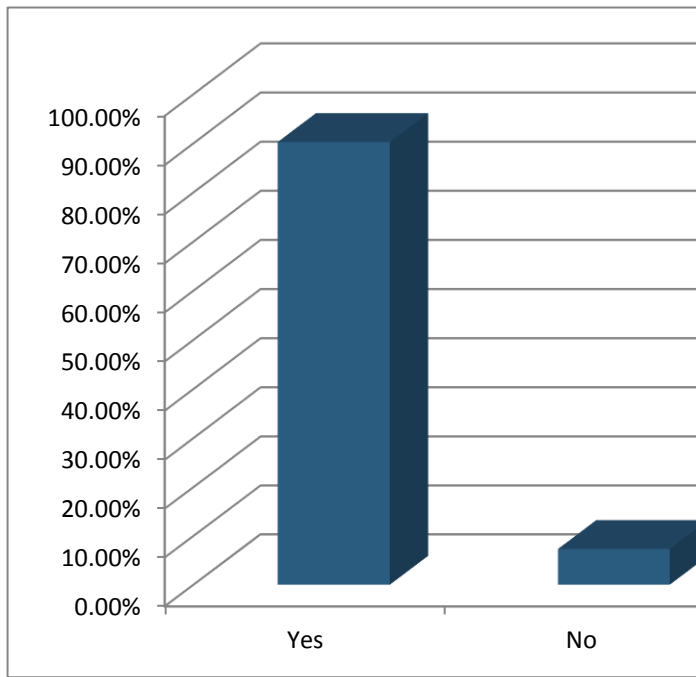
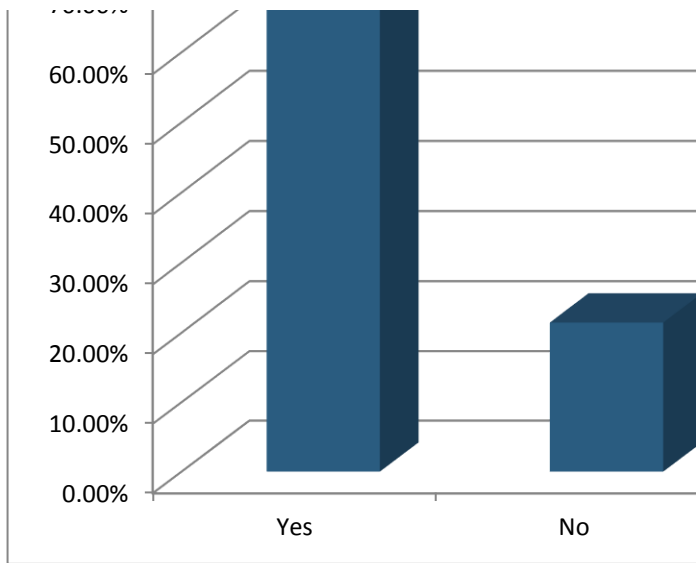


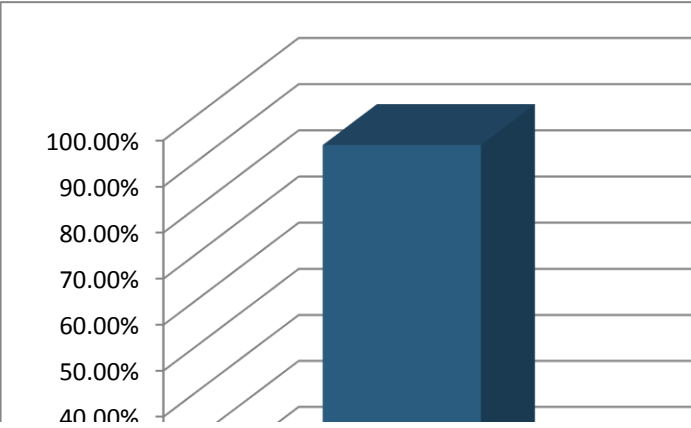
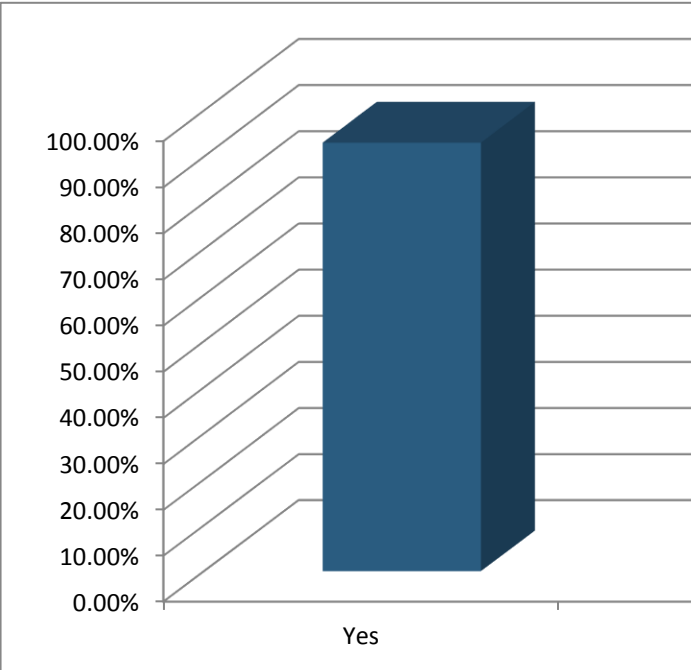
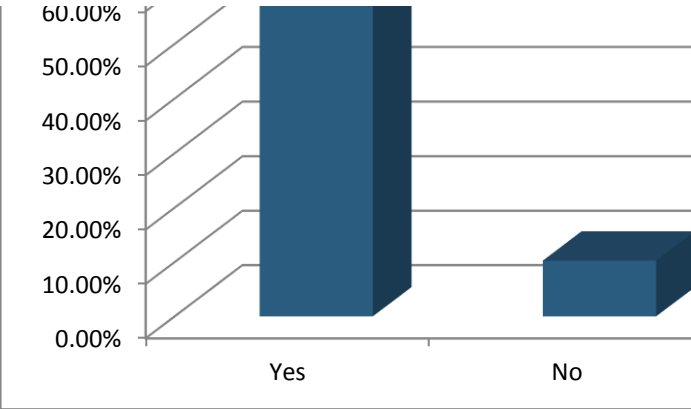


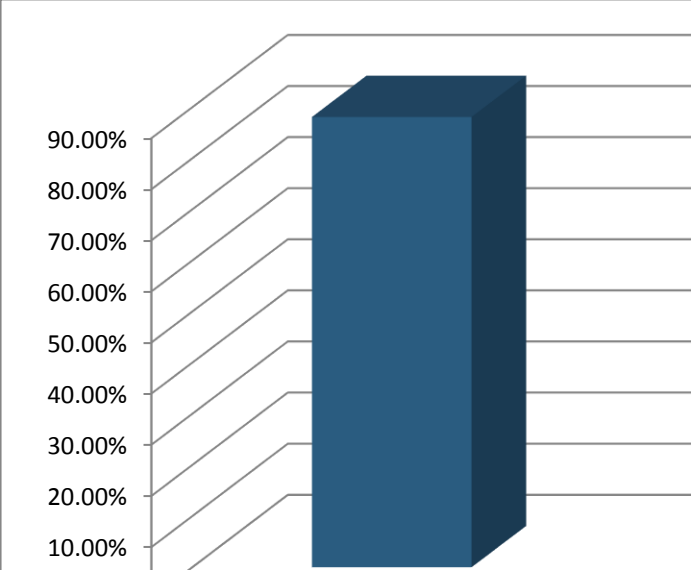
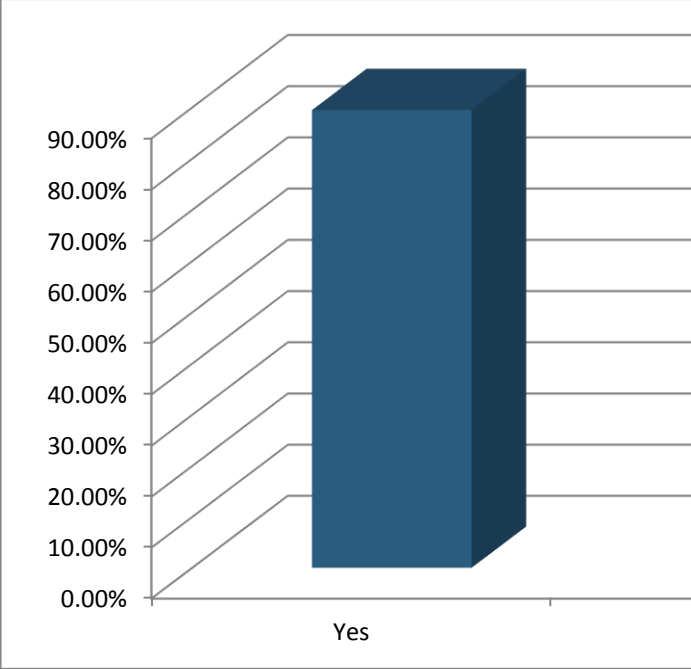
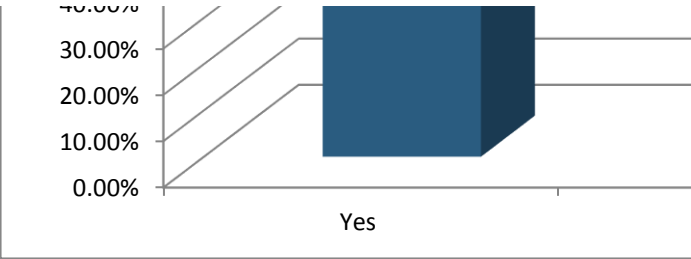
Yes No

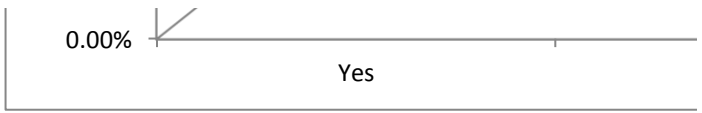


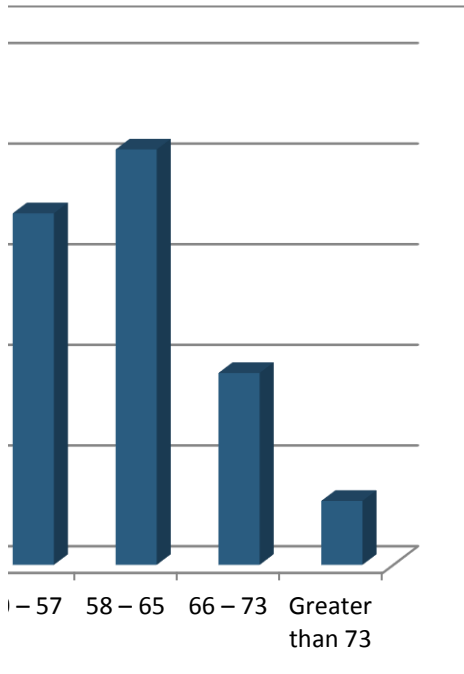


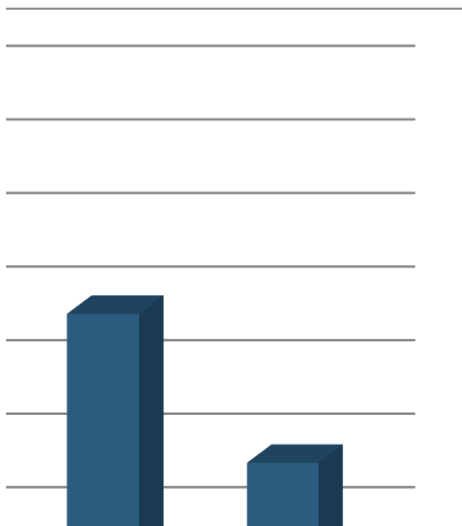
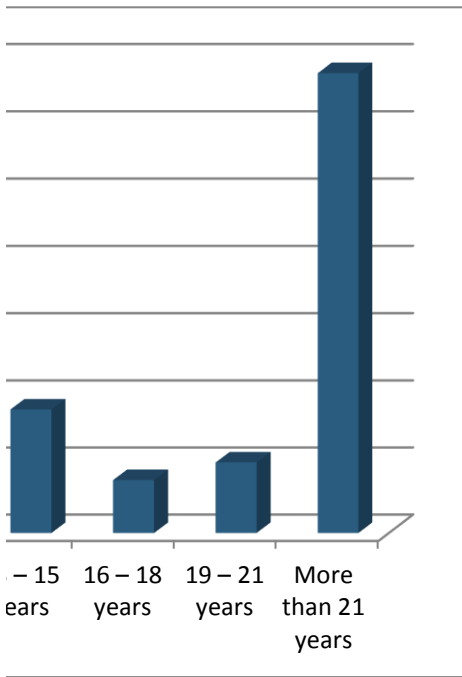
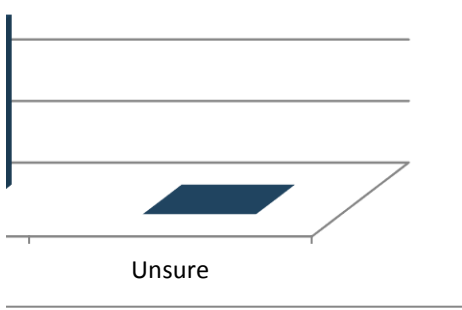


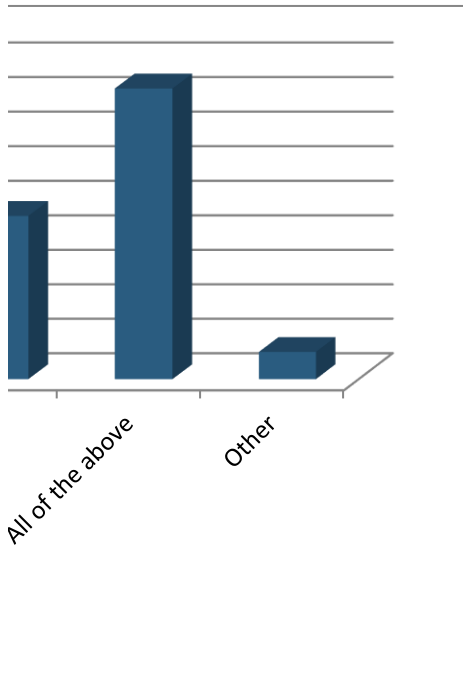
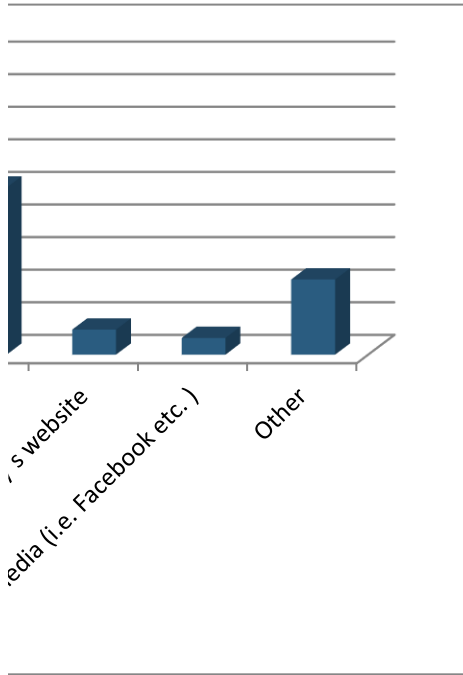
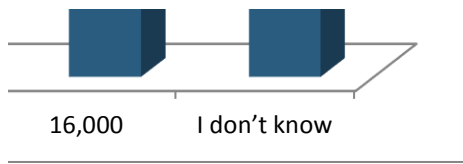


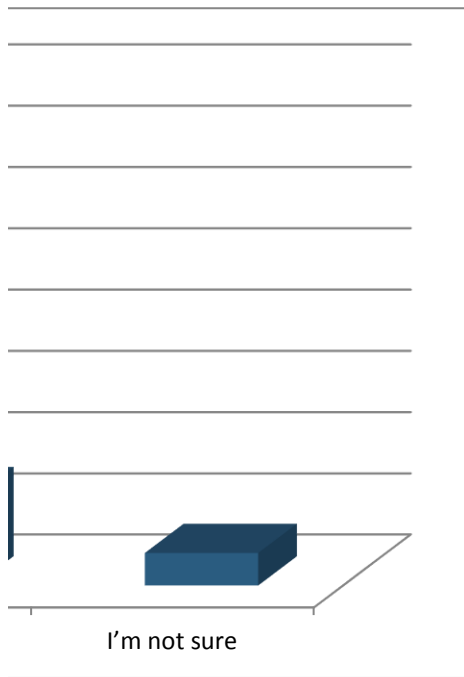
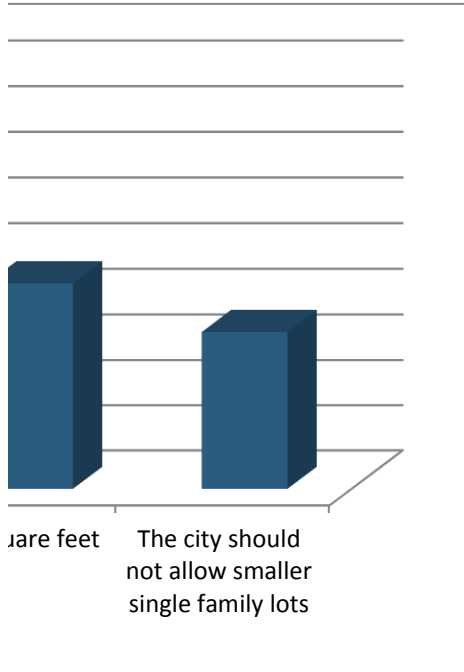


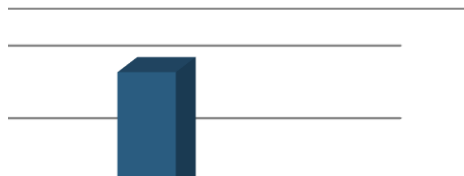
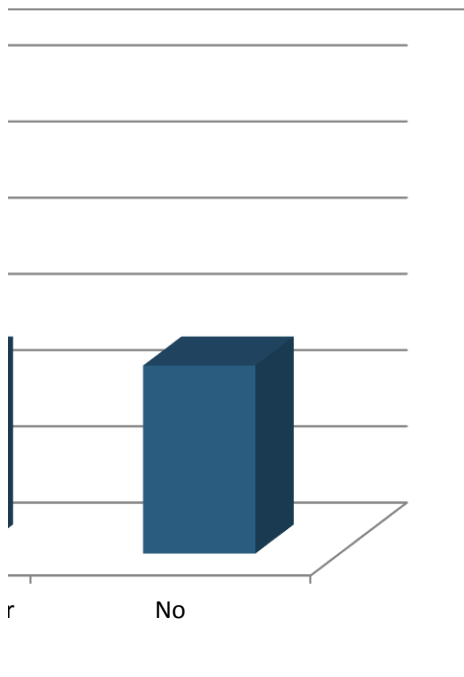
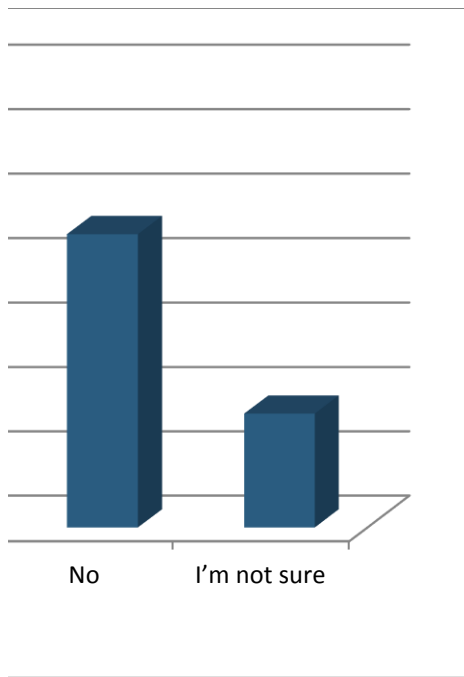


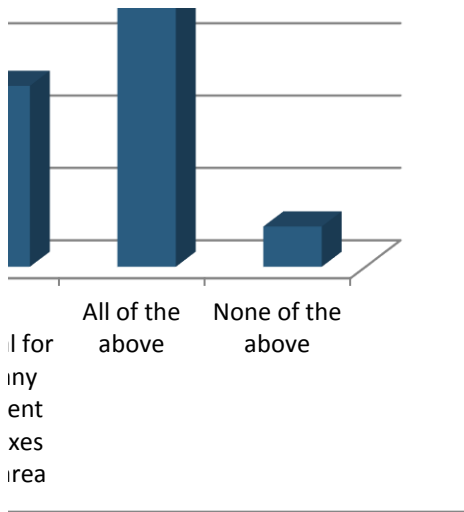




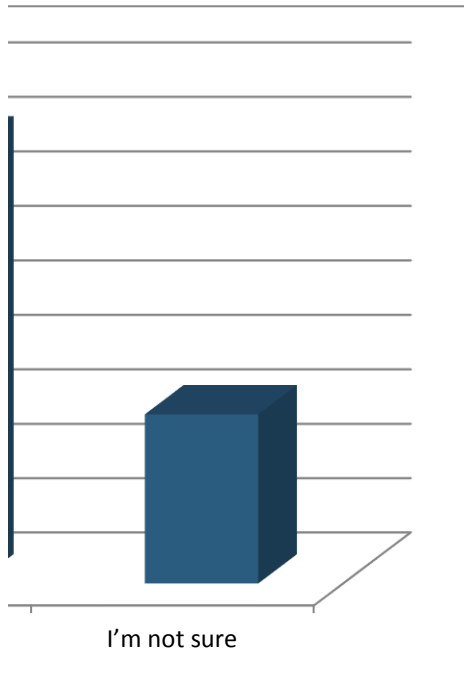


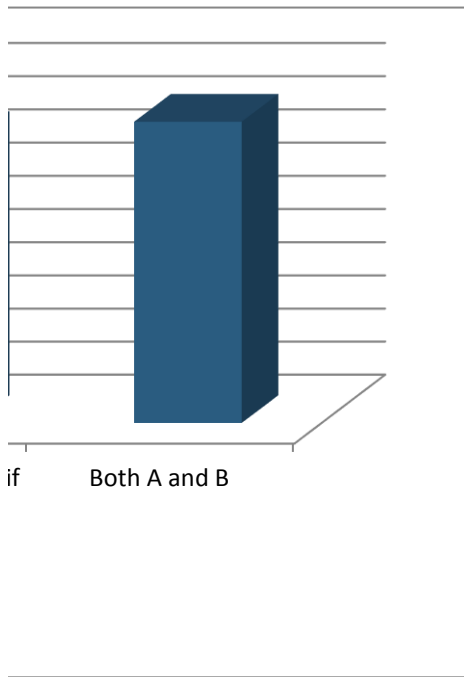
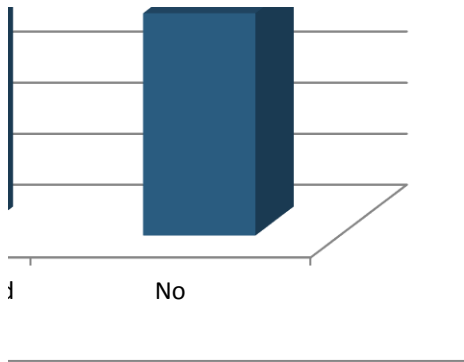


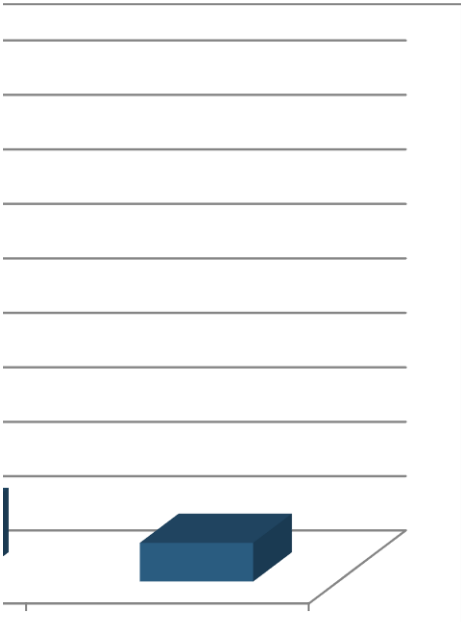
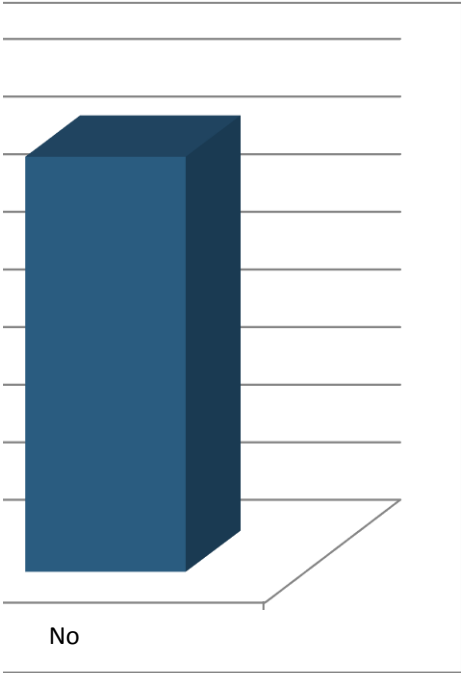
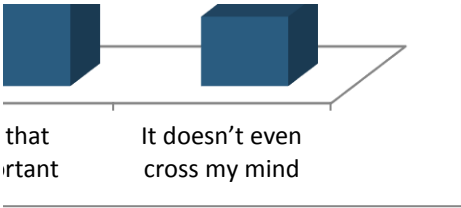




in space? (Multiple Choice)









I have no opinion

Blank lined area for writing.

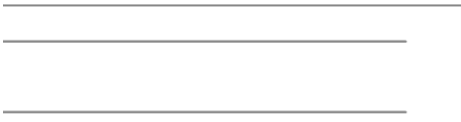
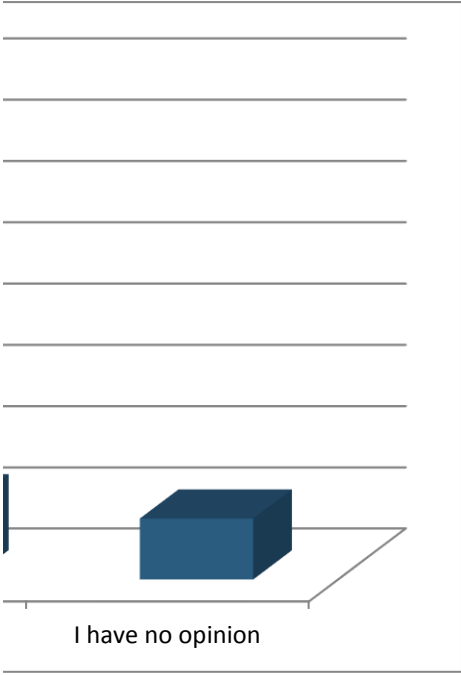
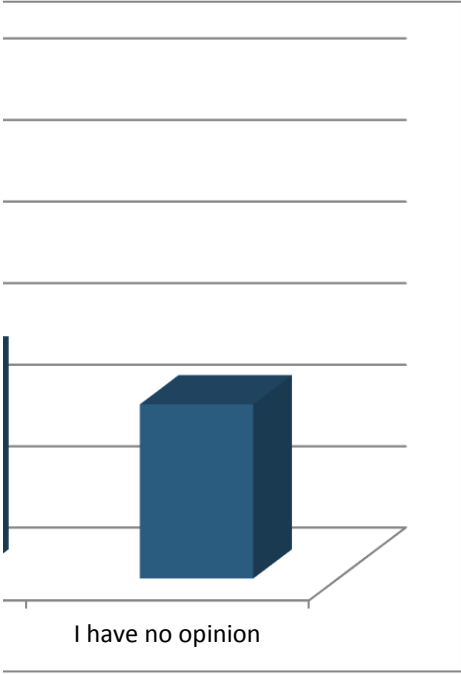


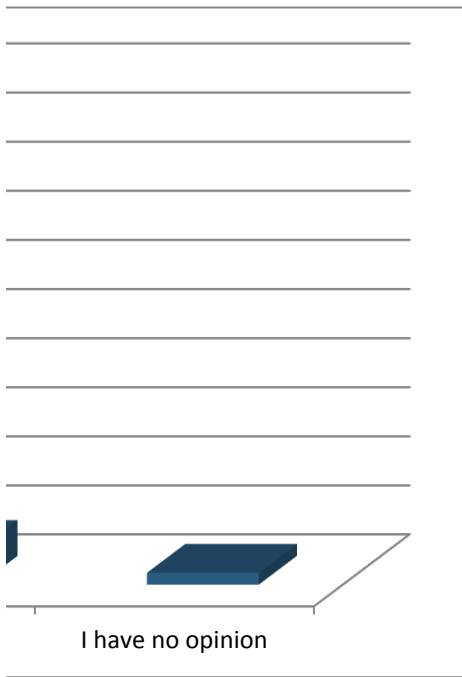
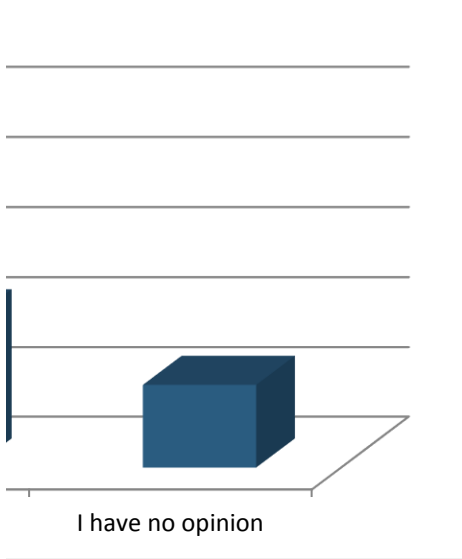
I have no opinion

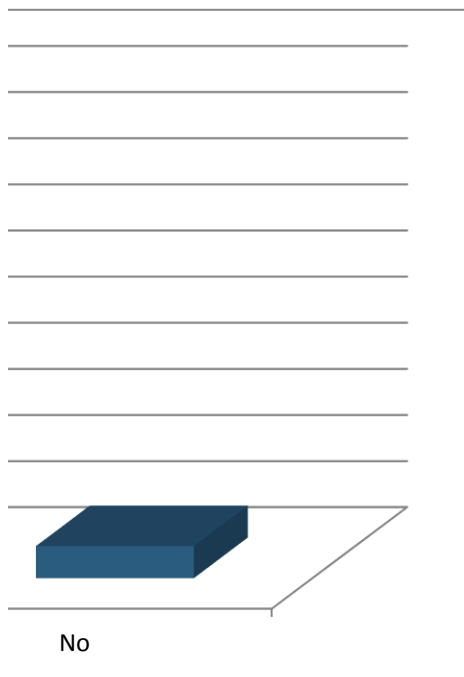
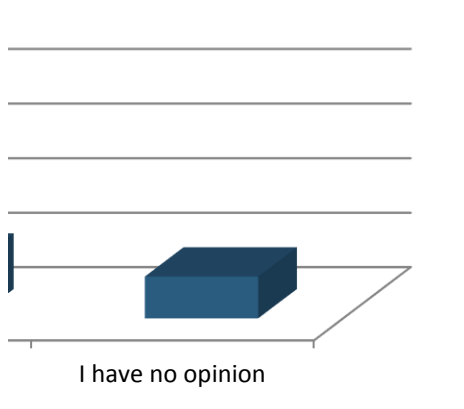
Blank lined area for writing.



I have no opinion

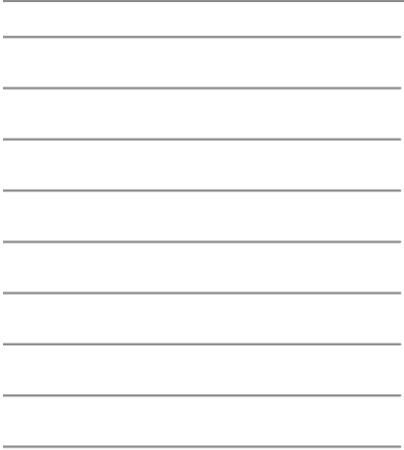




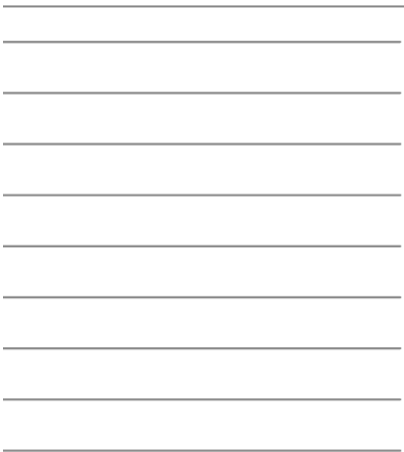




No



No



No