

TIPS TO PREVENT OR THAW FROZEN PIPES:

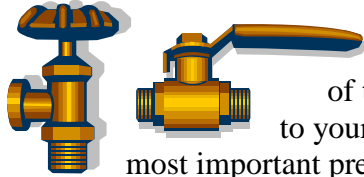
FROZEN PIPES:

Each winter, many water customers experience the inconvenience of frozen pipes, which can result in expensive plumbing repairs and water damage. The CITY OF SCAPPOOSE offers the following tips to



minimize your chance of having frozen pipes.

LOCATE THE SHUTOFF VALVE:



Knowing the exact location of the shutoff valve to your water may be the most important precaution that you can take. If a pipe bursts somewhere in your home or business – either in the kitchen, bath, basement, or crawl space – this valve turns off the flow of water. The valve is usually located outside near the point where the water line enters your home/business. In some homes the shutoff valve may be in the basement, garage,



or in the crawl space beneath the floor. Older homes might not have a shut-off valve. Another option in the case of an emergency is to turn off the water at the meter gate-valve which will be located on the home side of the water meter. The meter usually is in a ground level box near the street curb in front of your home/business. Use extreme caution as any damage to the valves in the meter box will be at the homeowner's expense.

The CITY OF SCAPPOOSE will respond in emergency water turn off situation.

METER PROTECTION: Check the meter box to ensure the cover is not broken, missing or out of place. Such conditions will allow cold air to enter. Report broken or missing covers to the City of Scappoose Public Works.



HOT WATER HEATER

PRECAUTION: If you have an emergency and need to turn off the water supply to your home or building, be sure to turn off the electric breaker to your hot water heater. This precaution applies only to hot water

heaters that operate on electricity, to prevent damage to your hot water unit.

ELIMINATE DRAFTS: Keep basement, garage doors and windows tightly closed in the winter. Close crawl space vents & doors. Seal cracks in the walls of the basement or crawl space. **BUT OPEN DOORS BELOW SINKS:** If a sink is located against an outside wall, open the vanity or cabinet doors to allow warm air to reach the water pipes.



LEAVE A FAUCET RUNNING:

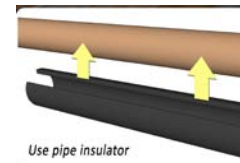
When temperatures are predicted to stay below freezing, leave a very thin stream of water running continuously from at least one tap in your home or business.

OUTSIDE FAUCET PROTECTION:

Disconnect and drain outdoor hoses. Detaching the hose allows water to drain from the pipe. Otherwise, freezing temperatures can cause the faucet or its pipe to burst. Outside faucet insulation can be found at local hardware stores or contact your plumber for information on frost proof faucets, which may be the answer for outside wall outlets that tend to freeze easily. If you have a sprinkler system, we recommend that you drain the water from the system before winter.



Have your plumber's phone number handy just in case.



Use pipe insulator

INSULATION: Insulate pipes or faucets in unheated areas. If you have pipes in an unheated garage or crawl space under the house or

building, wrap the water pipes before winter. Hardware or building supply stores will have good pipe wrapping materials available.



BE SAFE & USE A HAIRDRYER:

Never thaw a frozen pipe with an open flame. Instead, use a hair dryer, heat tape, or a light bulb.

DRAIN PIPES BEFORE VACATIONS:

When leaving town for extended periods with the heat left off in your home or business, turn off the water at the shutoff valve and drain the lines.



Beware of sagging lines, which may not completely drain.

USE A LICENSED CONTRACTOR:

For your protection; Be sure the plumber or contractor(s) you use have an 'active' license & bond. Check licenses online at; www.licenseinfo.oregon.gov

These tips provided to you by THE CITY OF SCAPPOOSE

(503) 543-7146 option 1

After hours call dispatch; (503)397-1521.

www.ci.scappoose.or.us



SCAPPOOSE Oregon

For additional winter storm preparedness visit;

www.oregonredcross.org

