

RESOLUTION NO. 22-18

A RESOLUTION OF THE SCAPPOOSE CITY COUNCIL

WHEREAS, the Mayor and City Council of the city of Scappoose, Oregon are committed to the protection of its citizens; and

WHEREAS, Portland & Western Railroad Inc.'s (PNWR) rail line runs through the City of Scappoose and has four at-grade railroad crossings located within the City. The rail line runs through both commercial and residential districts, as well as abutting all Scappoose Public Schools, and is directly parallel with the Highway 30 corridor; and

WHEREAS, the City of Scappoose supports projects that provide economic and job benefits locally and regionally, and recognizes the importance of rail transportation to support industry; and

WHEREAS, the Mayor and Council are concerned with public safety and economic development within the City of Scappoose; and

WHEREAS, Portland & Western Railroad intends to terminate their easement of the eastern portion of the former Scappoose Station grounds; and

WHEREAS, the Oregon Department of Transportation intends to quitclaim that property to the City of Scappoose; and

NOW THEREFORE BE IT RESOLVED that:

- 1) The City of Scappoose acknowledges PNWR's intention to terminate its easement of the eastern portion of the former Scappoose Station grounds between approximately: East Columbia Avenue in the South, NE 1st Street in the West, a line in the East as can be seen in **Exhibit A**, and to a line parallel to and aligned with the northern edge of Tax Lot 1600 as described in **Exhibit A**, labeled as "ODOT ROW Dedication Area", here on out in this document "Dedication Area", and as shall be described in further.
- 2) The City of Scappoose acknowledges the Oregon Department of Transportation's (ODOT) intention to quit claim the Dedication Area to the City of Scappoose.
- 3) The City of Scappoose shall use the Dedication Area to improve and develop the currently underdeveloped and substandard NE 1st Street between E Columbia Avenue and NE Watts Street, construct a concrete driveway at NE Watts Street to allow access to the remaining rail parcel, and install and maintain a four-foot-tall chain link fence with double 16-foot-wide chain link gates at NE Watts Street.

- 4) The City of Scappoose shall forgo enforcement action against ODOT and/or PNWR for construction and maintenance of sidewalks on ODOT Public Transportation Division right-of-way bordering E. Maple Street, E. Columbia Avenue, and the new east border of NE 1st Street.

PASSED AND ADOPTED by the Scappoose City Council this 21st day of November 2022, and signed by me and the City Recorder in authentication of its passage.

CITY OF SCAPPOOSE, OREGON



Scott Burge, Mayor

Attest:



Susan M. Reeves, MMC, City Recorder



SCAPPOOSE
Oregon

December 1, 2022

Ryan Englebright
General Manager
Portland & Western Railroad, Inc.
1200 Howard Drive SE
Albany, OR 97322

RE: Portland & Western Railroad (PNWR) Operations in Scappoose, Oregon

Dear Mr. Englebright,

The City of Scappoose incorporated just over one hundred years ago. As the City developed, growth occurred on both sides of the pre-existing railroad corridor and an adjacent state highway. This presents challenges for our citizens as they move about town, and we recognize the fact that this presents challenges for the PNWR as well. We look forward to a continued partnership with your railroad, and on collaborating to improve safety outcomes and efficiencies.

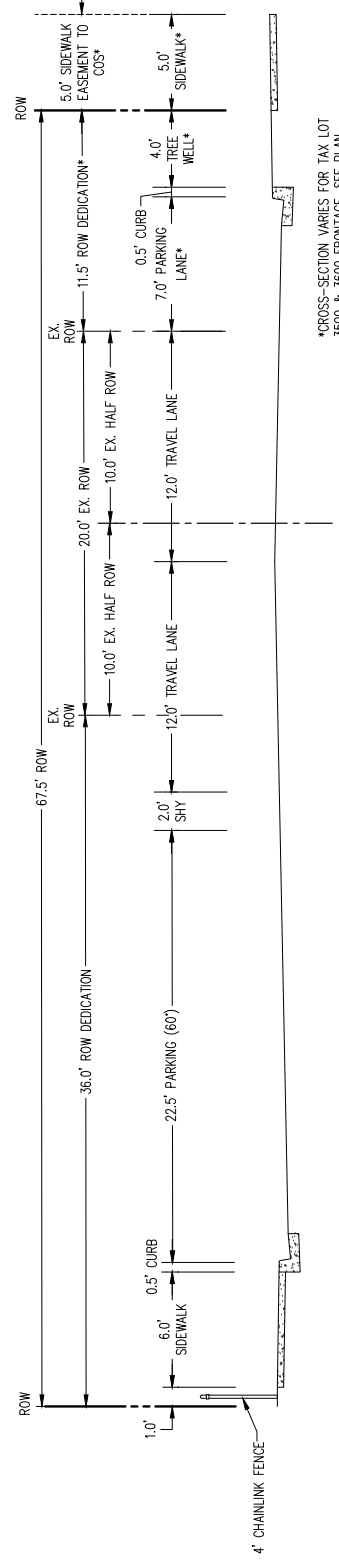
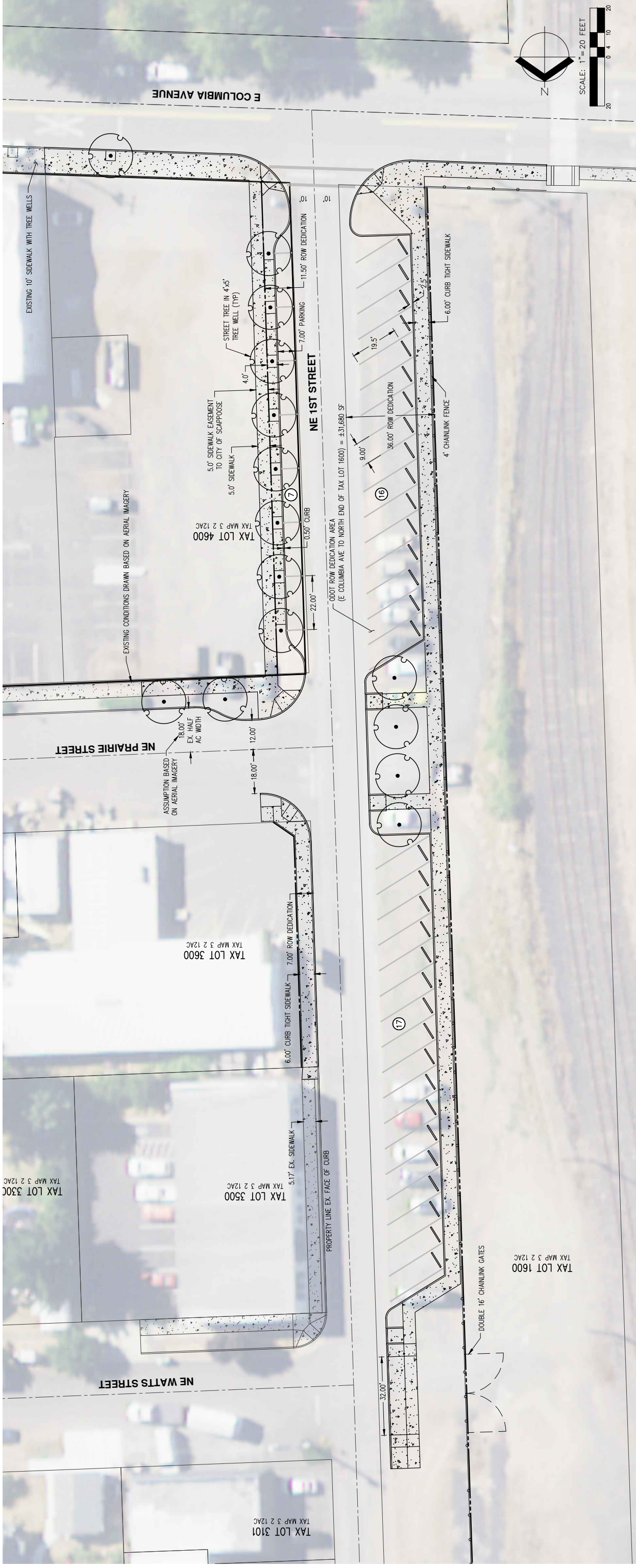
In addition, I am writing to convey our support of PNWR's right, duty, and responsibility to conduct railroad operations upon its tracks and within its rail corridor now and into the future, so long as the PNWR exists. The City of Scappoose acknowledges and supports the operating rights, duties, and responsibilities of PNWR, including trains passing through Scappoose, as well as the right, duty, and responsibility to switch, store, load, unload, and move rail cars on its tracks and rail corridor throughout the City of Scappoose.

The City will convey this message in response to comments, concerns, or complaints that are logged with the City related to PNWR's use of its railroad tracks and railroad corridor that are in or that pass through the City of Scappoose.

Sincerely,

Scott Burge, Mayor

Exhibit A



NE 1ST ST (LOCAL)
CONCEPTUAL SECTION
SCALE: 1" = 5'

*CROSS-SECTION VARIES FOR TAX LOT 3500 & 3600 FRONTAGE. SEE PLAN

NOTES:

1. ALL PROPERTY LINES AND RIGHT-OF-WAY LINES ARE BASED ON GIS INFORMATION PROVIDED BY OTHERS AND ARE CONSIDERED APPROXIMATE. NO FIELDWORK OR SURVEY HAS BEEN CONDUCTED AT THIS TIME.
2. A COMPLETE TITLE RESEARCH OR REVIEW HAS NOT BEEN DONE AT THIS TIME. THIS LAYOUT IS FOR FEASIBILITY PURPOSES ONLY AND IS CONSIDERED APPROXIMATE.
3. THIS IS A CONCEPTUAL LAYOUT AND IS SUBJECT TO CHANGE BASED ON CITY/GOVT/RAILROAD REQUIREMENTS, UTILITY SERVICES, TRANSPORTATION REQUIREMENTS, NATURAL RESOURCES, SURVEY DATA, TOPOGRAPHIC CONSTRAINTS, AND OTHER ITEMS.
4. THIS LAYOUT IS SUBJECT TO CHANGE PENDING INFORMATION FROM A PRE-APPLICATION CONFERENCE, PRELIMINARY ENGINEERING AND CITY REVIEW AND APPROVAL OF LAND USE APPLICATION.
5. PARKING LOT ACCESS TO TAX LOT 3600 NEEDS TO BE COORDINATED WITH THE PROPERTY OWNER.
6. EXISTING UTILITY RELOCATION HAS NOT BEEN CONSIDERED AT THIS TIME.
7. STORMWATER DRAINAGE CONCEPT INVOLVING DRY WELLS IN INTERSECTIONS IS NOT SHOWN.



CONCEPTUAL LAYOUT 03

33555 E COLUMBIA AVENUE